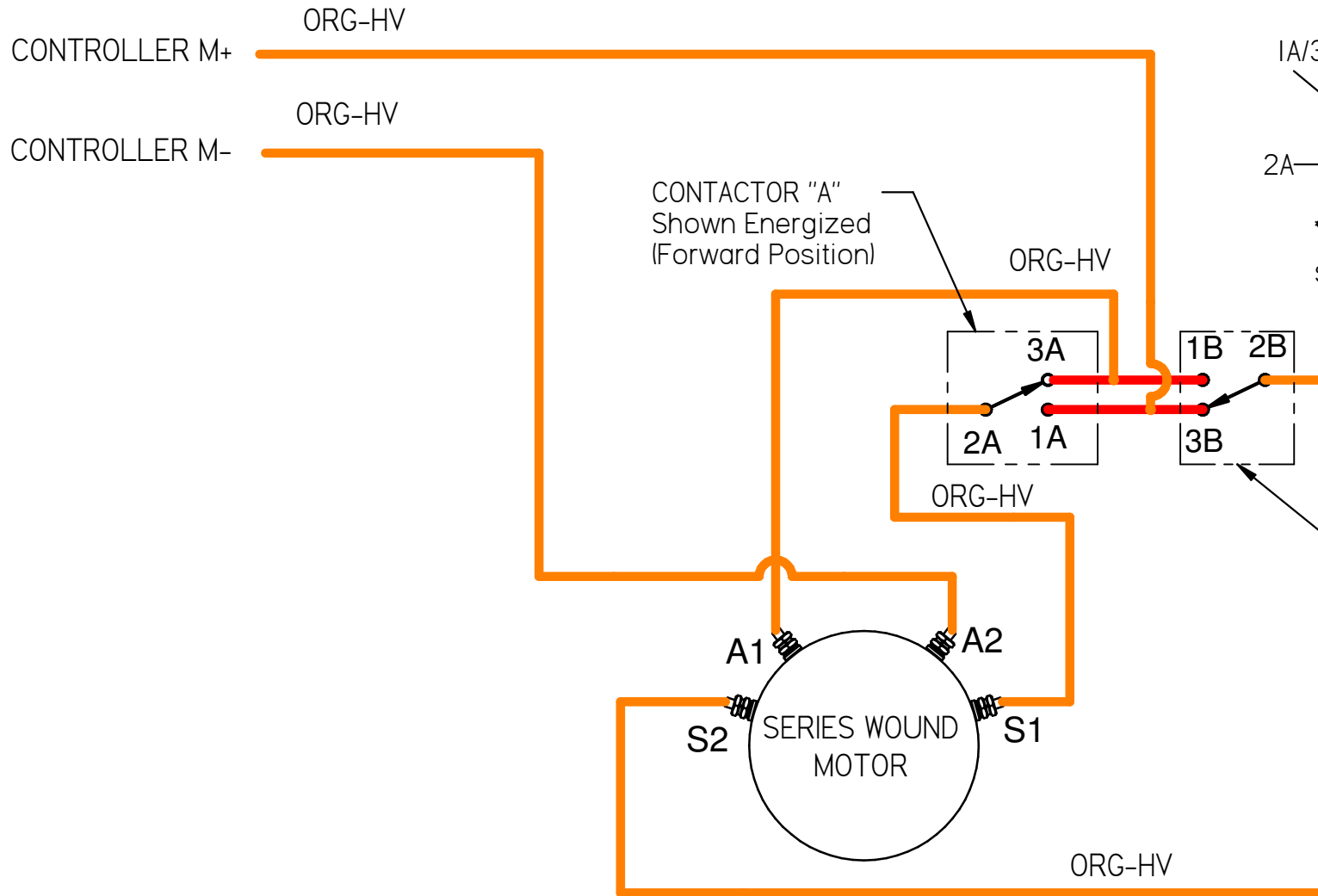
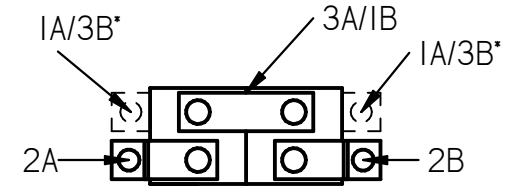


REVISION HISTORY			
REV	DESCRIPTION	DATE	APPROVED
0	DRAWN ON CAD	09/28/10	
1	ADDED CLARIFICATIONS	01/11/12	



Reversing Contactor, e.g.  
Albright SW202A



\*1A/3B can come out either side, depending on MFR.

Energize "A" for forward  
Energize "B" for reverse

NOTES:

1. HV = High Voltage Wire

NAME	DATE	NetGain Controls, Inc.	
DRAWN: FRED	09/28/10	TITLE: REVERSING CONTACTOR WIRING SCHEMATIC	
CHECKED: RYAN	01/11/12	SIZE: A	PART NO. REV: 0
PLOT DATE: 01/11/12		WDI_Wiring_Diagram_Reverse.dft	
THIS DRAWING IS THE PROPERTY OF NETGAIN CONTROLS, INC. AND IS NOT TO BE USED FOR ANY PURPOSE OTHER THAN THAT FOR WHICH IT WAS SPECIFICALLY FURNISHED		SCALE:	WEIGHT: